



The Princess Grace aims to be the private hospital of choice in London.

Our hospital teams are consistent in delivering a high standard of care and service. We are dedicated to delivering a healthcare service

that meets the needs of the patient and are motivated to deliver patient care efficiently and effectively.

At the Princess Grace Hospital we aim to make a difference in the delivery of care to patients:

Provision of facilities to ensure medical and clinical professional staff have technology and support required.

Hospital staff committed to have pride in caring for patients and for each other.

A commitment to meeting and exceeding regulatory requirements.

Follow through to respond to the call for improvement and effective use of resources.

Pride in caring	2
A team of professionals	3
Investment and expertise	4
Care and comfort	6
Accreditation and recognition	7
General information	8



Medical Specialities

- Endocrinology
- Gastroenterology
- General Medicine
- Haematology
- Psychiatry
- Sports Medicine
- General Medicine

Surgical Specialities

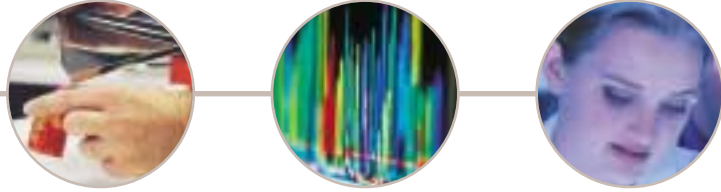
- Breast
- Colorectal
- ENT
- Maxillo-facial and Oral
- Neurospinal
- Orthopaedics
- Plastics and Cosmetics
- Urology
- Vascular

Liaison

- The London Cancer Group
- The London ENT Partners
- The London Hip Unit
- The London Lithotripter Centre
- The London Plastic Surgery Associates
- The London Sleep Centre
- The London Urology Associates

Services and Facilities

- Breast Assessment Centre
- Brain and Spine Centre
- Diagnostic imaging
- Endoscopy Centre
- ITU/HDU
- The London Prostate Centre
- Operating Theatre Suite



The Princess Grace Hospital is an acute care facility situated in the heart of London's esteemed medical district, just a short distance away from the capital's Harley Street.

The Princess Grace Hospital was established in 1977 and is one of the best-equipped multi-disciplinary private hospitals in the capital, offering reputable patient care across all the specialities it encompasses.

The hospital has gained global recognition for its medical excellence and attracts an international clientele as well as its continually expanding register of British patients.

The Princess Grace is one of 6 London based acute-care hospitals operated by HCA International, one of the UK's leading providers of independent healthcare services and the largest private hospital group in London.

Committed to quality and value, HCA International offers modern technology and advanced surgical procedures combined with personal and professional care.



The Princess Grace Hospital has 110 beds, including an Intensive Care and High Dependency Unit. All private rooms have en-suite facilities, telephone with direct dial facilities, a nurse call system and a television.

We aim to make your stay at the hospital as pleasant and as comfortable as possible - which is why The Princess Grace is committed to quality patient care, and has dedicated and highly trained staff at every level. So you can be sure that you are receiving the best possible treatment.

During your stay you will be cared for by a team of professionals:

- The consultant who arranged your admission will continue to be in charge of your clinical care and is responsible for keeping you fully informed of all treatments and clinical procedures.
- A Resident Medical Officer (a fully qualified doctor), who is available 24 hours a day.
- A fully equipped Intensive Care Unit (ICU / ITU), with consultants and intensivists available 24 hours a day.
- Specialist nurses who assist on post and pre operative care and counselling.
- Fully trained ward nurses to make your stay as pleasant and comfortable as possible.
- This team is supported by the Hotel Services Department.



The Princess Grace's investment in technology is matched to the needs of clinicians and patients and is essential in providing an optimum environment for treatment.

The hospital has six fully equipped operating theatres including two Laminar Flow for Orthopaedic surgery.

Complex invasive procedures are supported by:

Eight imaging rooms equipped for general radiology

Arteriography

Bone densitometry

Digital fluoroscopy

Computer Aided Detection Software (CADs)

16 slice CT scanning

Digital mammography

Specialised gastrointestinal studies

Ultrasound

Urodynamic studies

1.5 Tesla MRI scanning

Gymnasium, private treatment rooms and a Pilates Studio combine to provide facilities for a variety of physical therapies

New treatments that are available include:

Brachytherapy and Cryotherapy for the treatment of cancer of the prostate and minimal access hip replacement surgery.





At the Princess Grace, we recognise that personalised care is crucial to your recuperation and that your recovery environment should suit individual needs and preferences.

The hospital provides you with facilities and services to give you warmth and comfort during your stay.

A varied menu selection - special dietary needs are fully catered for.

Flexible visiting hours - so that friends and family can visit at a time that is convenient for you and them.

Privacy - so you can relax before and after your treatment.

Other services for you and your family.

Should you require further information on particular treatments and procedures, specialist service brochures are available either in leaflet form or via www.theprincessgracehospital.com. A comprehensive list can be found on the patient download on the website.



HQS and ISO9001:2000

The Princess Grace has attained accreditation from the internationally recognised quality frameworks of Health Quality Service (HQS) and ISO 9001:2000.

HQS is a quality management process enabling healthcare organisations to examine themselves critically against a nationally recognised framework of organisational standards.

Achieving the HQS standards with ISO9001:2000 demonstrates our dedication to an on-going system of quality management and improvement that is applied throughout the hospital.

The system recognises good practice and sets an agenda for service development, promoting development through enhanced communication and monitoring.

BUPA Accreditation

Individual services at the hospital have also achieved accreditation in recognition of the high levels of care they provide, namely our BUPA Accredited:

Breast Assessment Unit

Colorectal Cancer Services

Queens Award

The Princess Grace Hospital, as part of HCA International, has won the prestigious Queens Award for Enterprise in International Trade 2003.



Medical Records

The Data Protection Act 1984 gives patients the legal right to access computerised records unless the information is likely to cause serious harm to the physical or mental health of the patient. The Access to Health Records Act 1990 gives patients the right to access their health records.

Application must be made in writing to the Chief Nursing Office not less than forty days after completion of treatment, by the patient or by an individual nominated by the patient, ie a solicitor, guardian.

THE PRINCESS GRACE HOSPITAL

**The Princess Grace Hospital**

42-52 Nottingham Place

London W1U 5NY

30 Devonshire Street

London W1G 6PU

Telephone: 020 7486 1234

Fax: 020 7908 2492

www.theprincessgracehospital.co.uk

Transport

London Underground: The nearest tube stations are Baker Street and Regent's Park.

British Rail: Marylebone Station and Euston Station are both within 800 metres.

Car parking

The nearest NCP is in Chiltern Street. There is also meter parking in the surrounding streets.

